

COMPOLITE®

CH-125

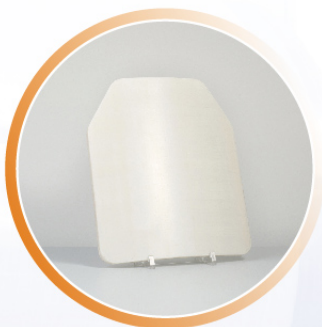
PRODUCT DESCRIPTION

CH-125 is a composite material for bullet-proof hard armor applications. It is made from ultra-high molecular weight polyethylene fiber (UHMWPE) and proprietary resins.

PRODUCT PARAMETER

Items	Properties
Fiber	UHMWPE
Areal density (g/m ²)	130±10
Standard Roll Length (m)	200
Standard Roll Width (cm)	160±2
Applications	Helmet, insert, shield, vehicle plate, etc
Suggested Areal Density (kg/m ²) Against AK47 7.62*39 MSC	18.0

1. Roll length or width can be tailored-made
2. Anti-trauma materials are recommended to further reduce BFS



COMPOLITE®

CH-221

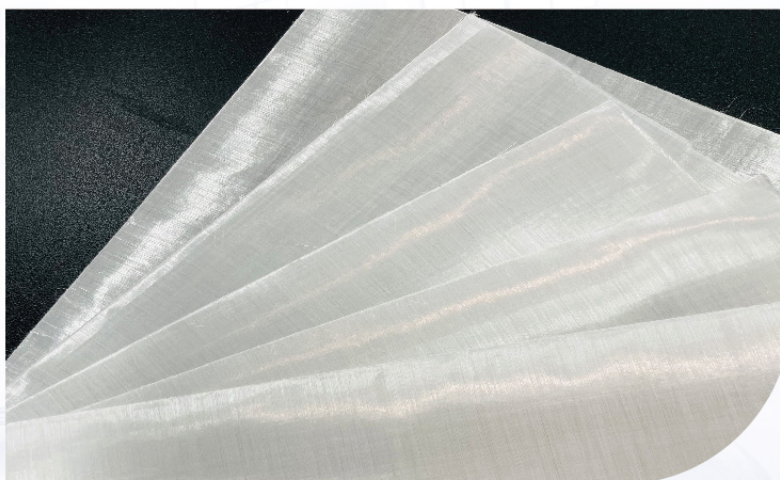
PRODUCT DESCRIPTION

CH-221 is a composite material for bullet-proof hard armor applications. It is made from ultra-high molecular weight polyethylene fiber (UHMWPE) and proprietary resins.

PRODUCT PARAMETER

Items	Properties
Fiber	UHMWPE
Areal density (g/m ²)	130±10
Standard Roll Length (m)	200
Standard Roll Width (cm)	160±2
Applications	Helmet, insert, shield, vehicle plate, etc
Suggested Areal Density (kg/m ²) Against AK47 7.62*39 MSC	16.0

1. Roll length or width can be tailored-made
2. Anti-trauma materials are recommended to further reduce BFS



COMPOLITE®

CH-325

PRODUCT DESCRIPTION

CH-325 is a composite material for bullet-proof hard armor applications. It is made from ultra-high molecular weight polyethylene fiber (UHMWPE) and proprietary resins.

PRODUCT PARAMETER

Items	Properties
Fiber	UHMWPE
Areal density (g/m ²)	120±10
Standard Roll Length (m)	200
Standard Roll Width (cm)	160±2
Applications	Helmet, insert, shield, vehicle plate, etc
Suggested Areal Density (kg/m ²) Against AK47 7.62*39 MSC	14.0

1. Roll length or width can be tailored-made
2. Anti-trauma materials are recommended to further reduce BFS



COMPOLITE®

CH-F21

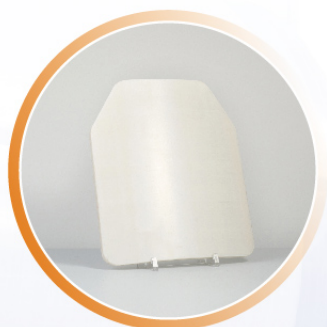
PRODUCT DESCRIPTION

CH-F21 is a composite material for bullet-proof hard armor applications. It is made from ultra-high molecular weight polyethylene fiber (UHMWPE) and proprietary resins.

PRODUCT PARAMETER

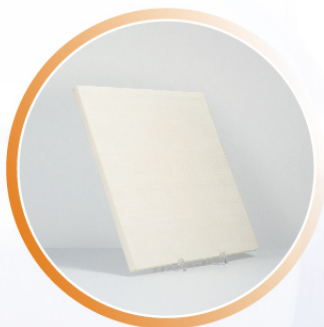
Items	Properties
Fiber	UHMWPE
Areal density (g/m ²)	105±10
Standard Roll Length (m)	200
Standard Roll Width (cm)	160±2
Applications	Helmet, insert, shield, vehicle plate, etc
Suggested Areal Density (kg/m ²) Against AK47 7.62*39 MSC	13.0

1. Roll length or width can be tailored-made
2. Anti-trauma materials are recommended to further reduce BFS



COMPOLITE®

CH-F2T



PRODUCT DESCRIPTION

CH-F2T is a composite material for bullet-proof hard armor applications. It is made from ultra-high molecular weight polyethylene fiber (UHMWPE) and proprietary resins.

PRODUCT PARAMETER

Items	Properties
Fiber	UHMWPE
Areal density (g/m ²)	105±10
Standard Roll Length (m)	200
Standard Roll Width (cm)	160±2
Applications	Helmet, insert, shield, vehicle plate, etc
Suggested Areal Density (kg/m ²) Against AK47 7.62*39 MSC	13.0

1. Roll length or width can be tailored-made
2. Anti-trauma materials are recommended to further reduce BFS



COMPOLITE®

CH-F29

PRODUCT DESCRIPTION

CH-F29 is a composite material for bullet-proof hard armor applications. It is made from ultra-high molecular weight polyethylene fiber (UHMWPE) and proprietary resins.

PRODUCT PARAMETER

Items	Properties
Fiber	UHMWPE
Areal density (g/m ²)	105±10
Standard Roll Length (m)	200
Standard Roll Width (cm)	160±2
Applications	Rifle Helmet, ultra-light insert, etc
Suggested Areal Density (kg/m ²) Against AK47 7.62*39 MSC	11.0

1. Roll length or width can be tailored-made
2. Anti-trauma materials are recommended to further reduce BFS

